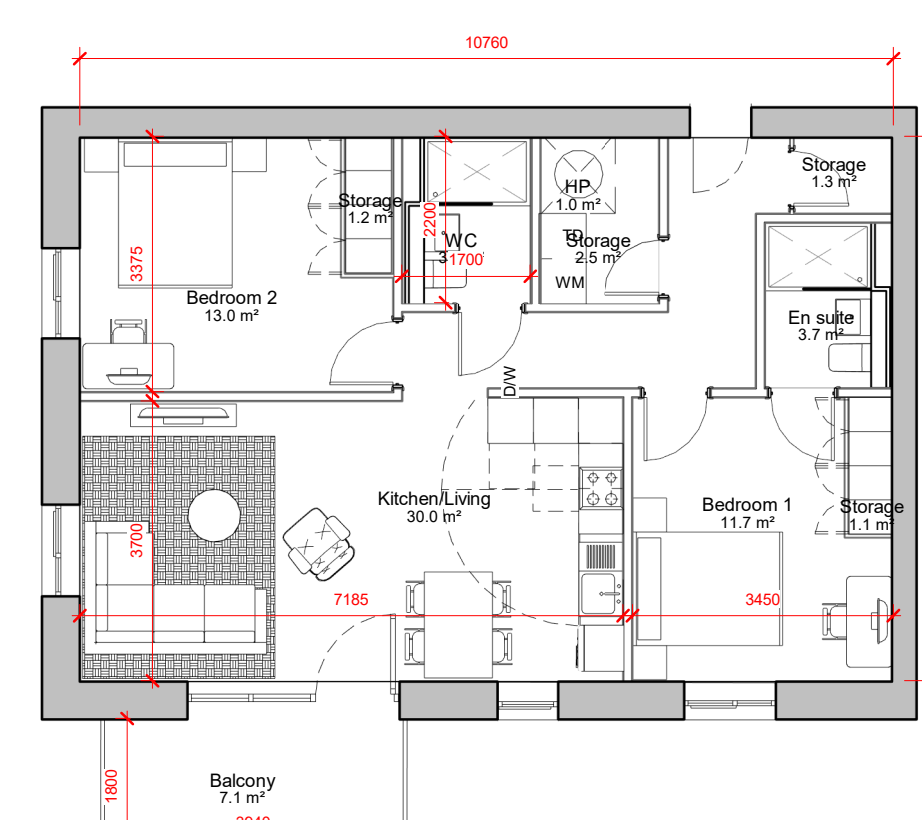


2 Bed - TYPE A - Room Schedule	
Name	Area
Balcony	7.0 m ²
Bathroom	4.4 m ²
Bedroom 1	13.0 m ²
Bedroom 2	11.4 m ²
En Suite	3.7 m ²
HP	1.0 m ²
Kitchen/Living	30.5 m ²
Storage	6.4 m ²

2 Bed Apt - TYPE A- Internal Area	
Area	74.5 m ²

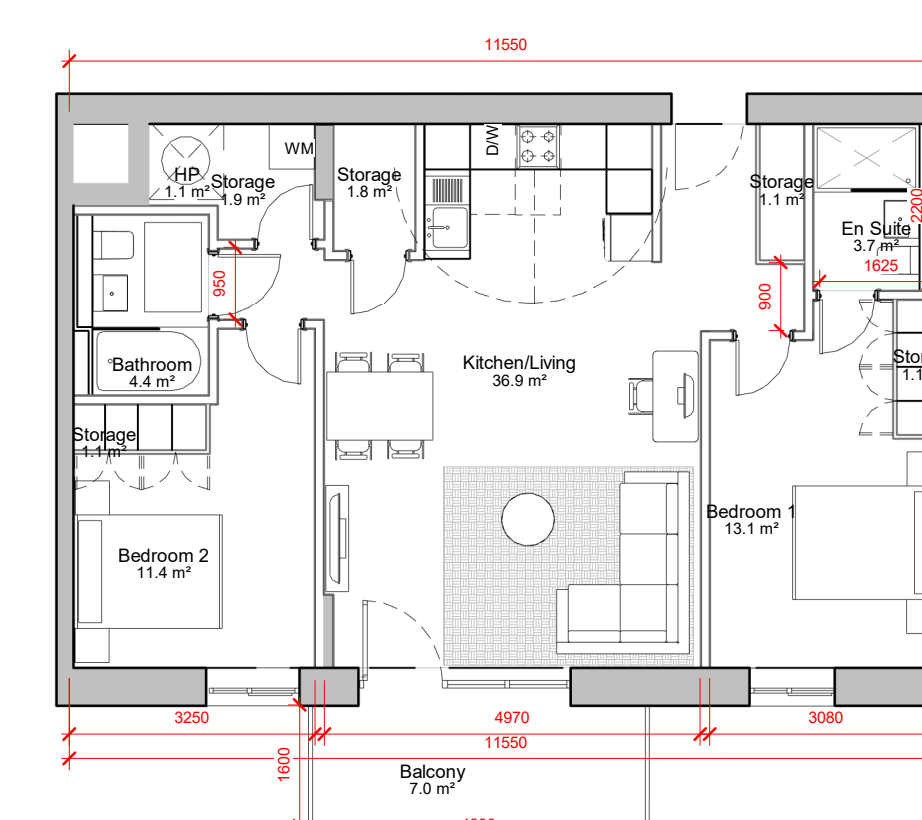
1 **2 BED TYPE A**
1 : 100



2 Bed - TYPE AA - Room...	
Name	Area
Balcony	7.1 m ²
Bedroom 1	11.7 m ²
Bedroom 2	13.0 m ²
En suite	3.7 m ²
HP	1.0 m ²
Kitchen/Living	30.0 m ²
Storage	6.1 m ²
WC	3.7 m ²

2 Bed Apt - TYPE AA- Internal...	
Area	77.5 m ²

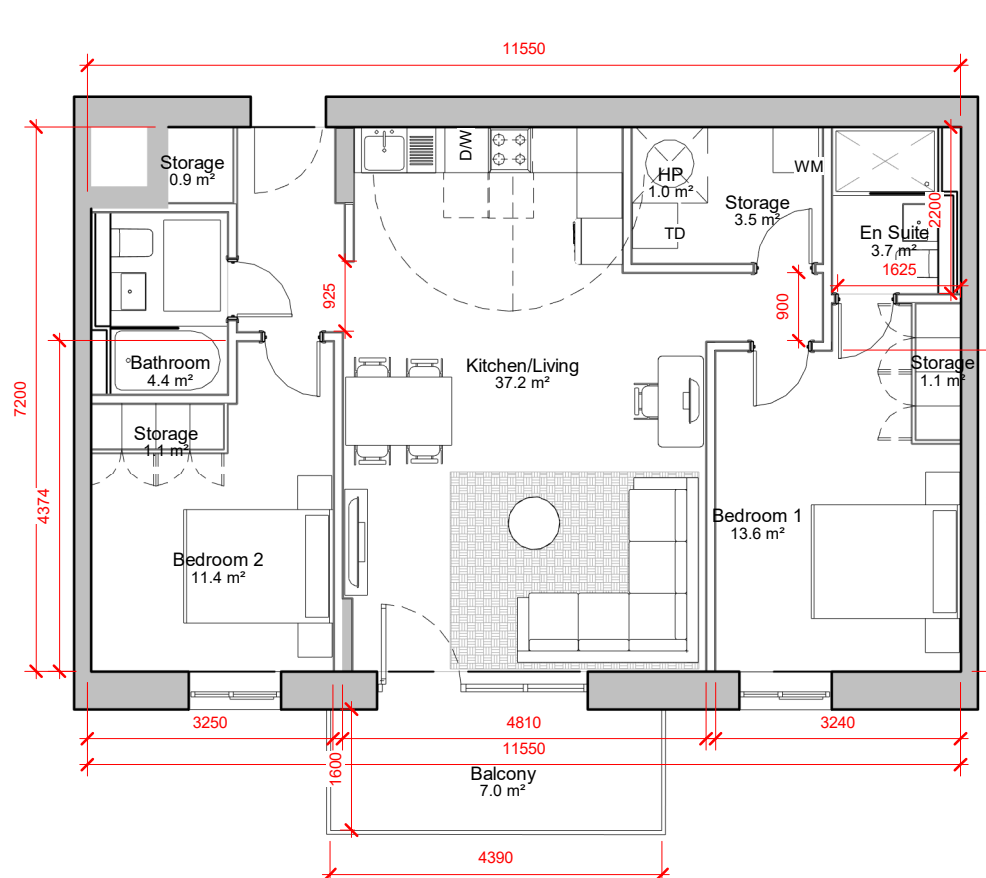
8 **2 BED TYPE AA**
1 : 100



2 Bed - TYPE A2 - Room Schedule	
Name	Area
Balcony	7.0 m ²
Bathroom	4.4 m ²
Bedroom 1	13.1 m ²
Bedroom 2	11.4 m ²
En Suite	3.7 m ²
HP	1.1 m ²
Kitchen/Living	36.9 m ²
Storage	7.0 m ²

2 Bed Apt - TYPE A2- Internal Area	
Area	83.2 m ²

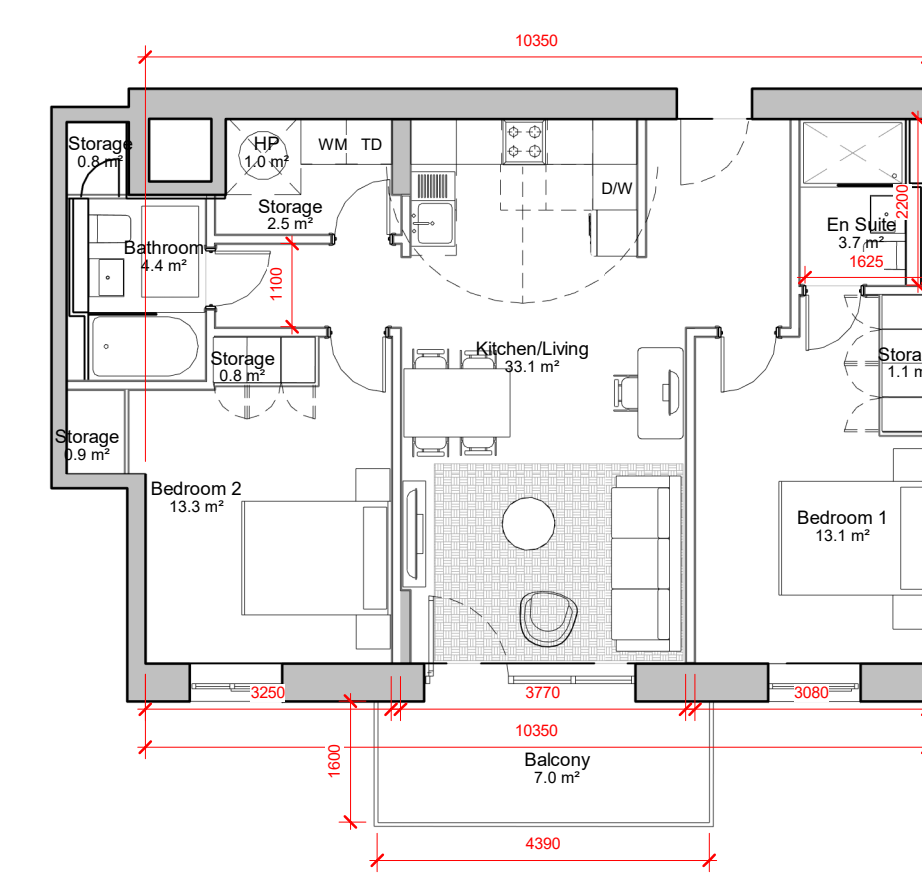
5 **2 BED TYPE A2**
1 : 100



2 Bed - TYPE A3 - Room Schedule	
Name	Area
Balcony	7.0 m ²
Bathroom	4.4 m ²
Bedroom 1	13.6 m ²
Bedroom 2	11.4 m ²
En Suite	3.7 m ²
HP	1.0 m ²
Kitchen/Living	37.2 m ²
Storage	6.6 m ²

2 Bed Apt - TYPE A3- Internal Area	
Area	82.1 m ²

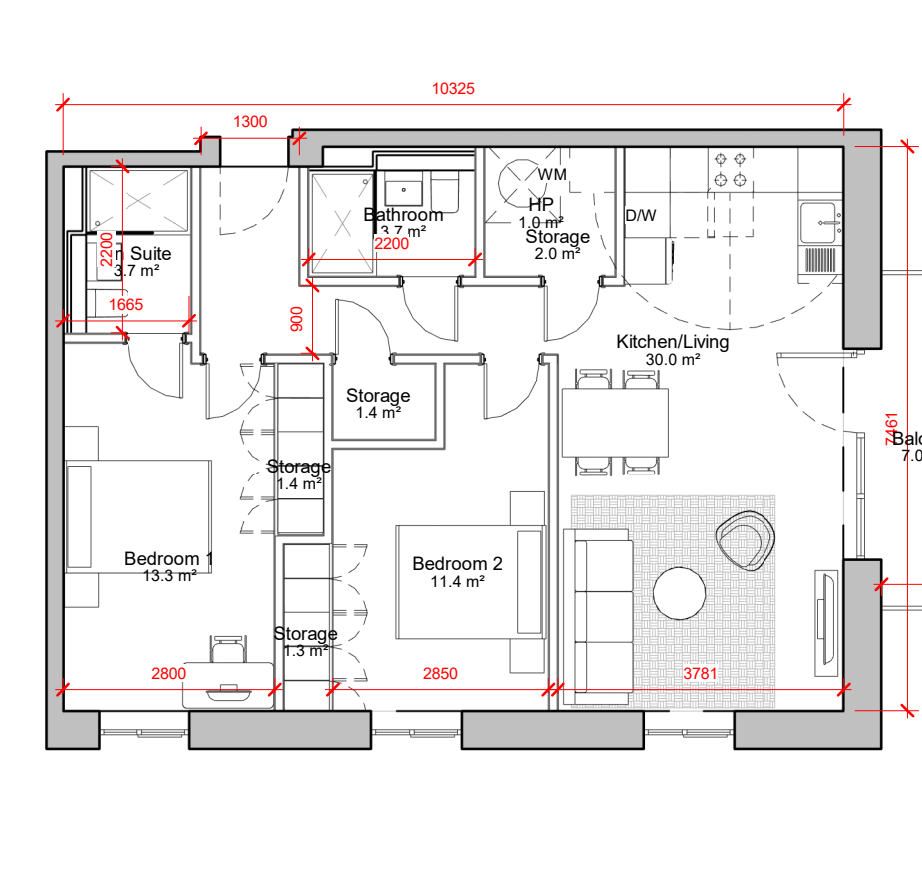
6 **2 BED TYPE A3**
1 : 100



2 Bed - TYPE A5 - Room Schedule	
Name	Area
Balcony	7.0 m ²
Bathroom	4.4 m ²
Bedroom 1	13.1 m ²
Bedroom 2	13.3 m ²
En Suite	3.7 m ²
HP	1.0 m ²
Kitchen/Living	33.1 m ²
Storage	6.0 m ²

2 Bed Apt - TYPE A5- Internal Area	
Area	78.1 m ²

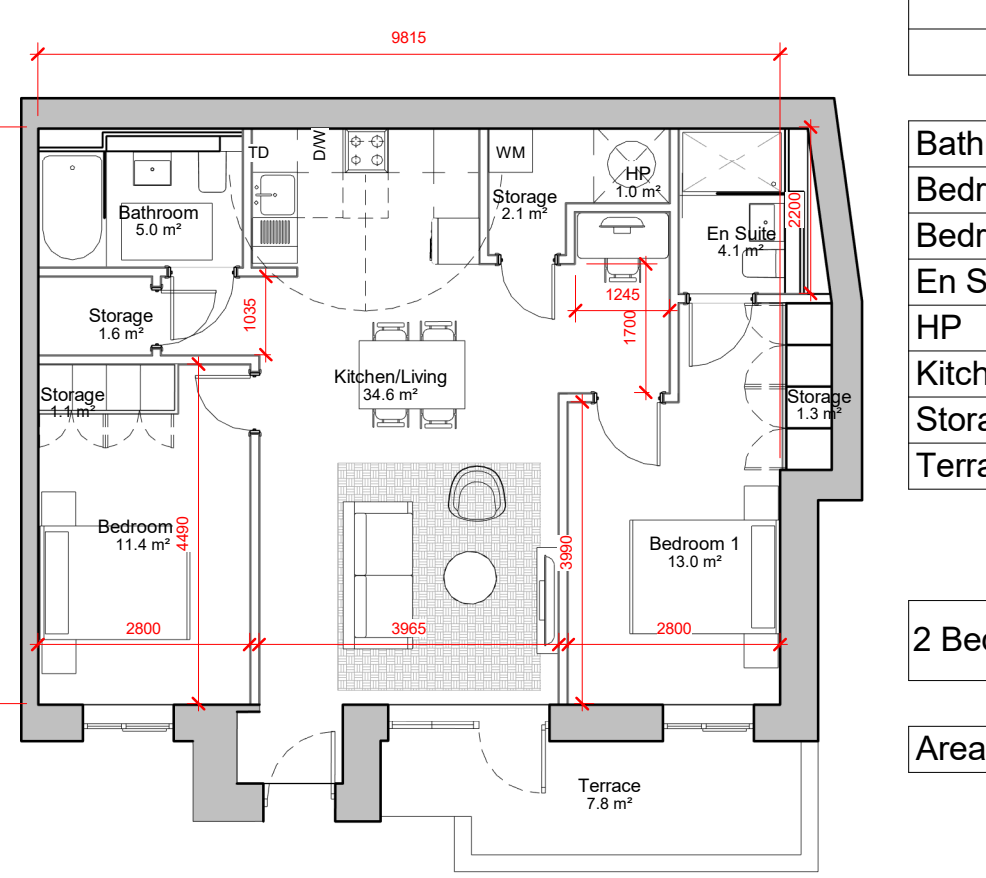
2 **2 BED TYPE A5**
1 : 100



2 Bed - TYPE A6 - Room Schedule	
Name	Area
Balcony	7.0 m ²
Bathroom	3.7 m ²
Bedroom 1	13.3 m ²
Bedroom 2	11.4 m ²
En Suite	3.7 m ²
HP	1.0 m ²
Kitchen/Living	30.0 m ²
Storage	6.0 m ²

2 Bed Apt - TYPE A6- Internal Area	
Area	76.1 m ²

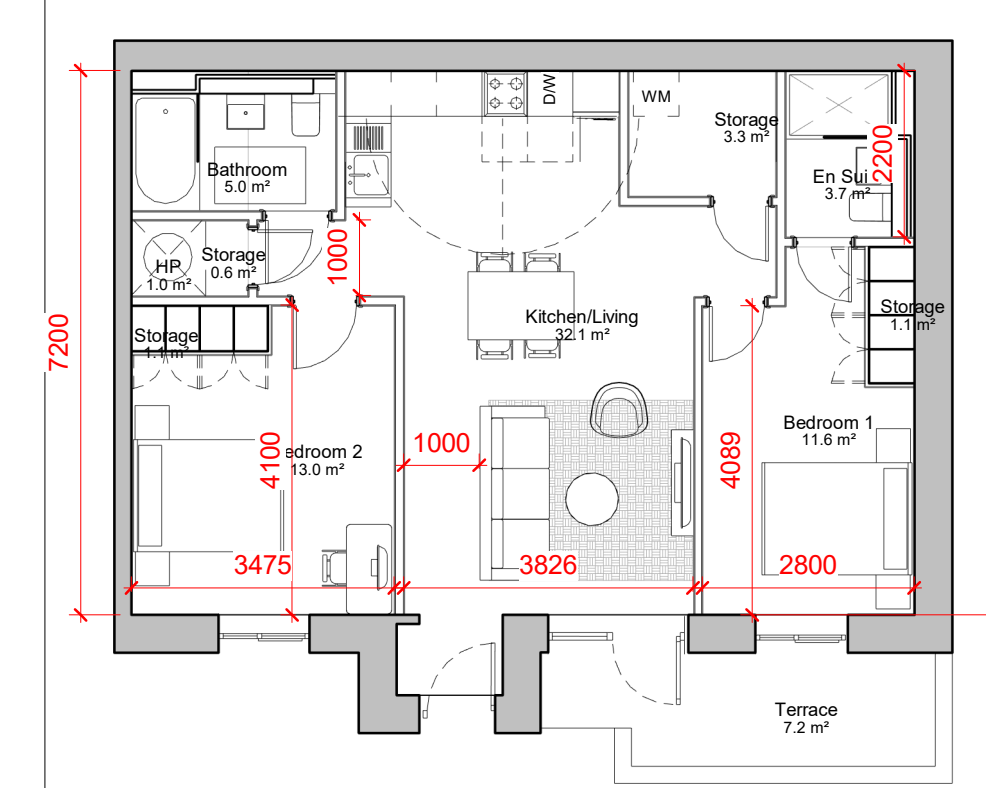
7 **2 BED TYPE A6**
1 : 100



2 Bed - TYPE A7 - Room Schedule	
Name	Area
Bathroom	5.0 m ²
Bedroom 1	13.0 m ²
Bedroom 2	11.4 m ²
En Suite	4.1 m ²
HP	1.0 m ²
Kitchen/Living	34.6 m ²
Storage	6.1 m ²
Terrace	7.8 m ²

2 Bed Apt - TYPE A7- Internal Area	
Area	78.7 m ²

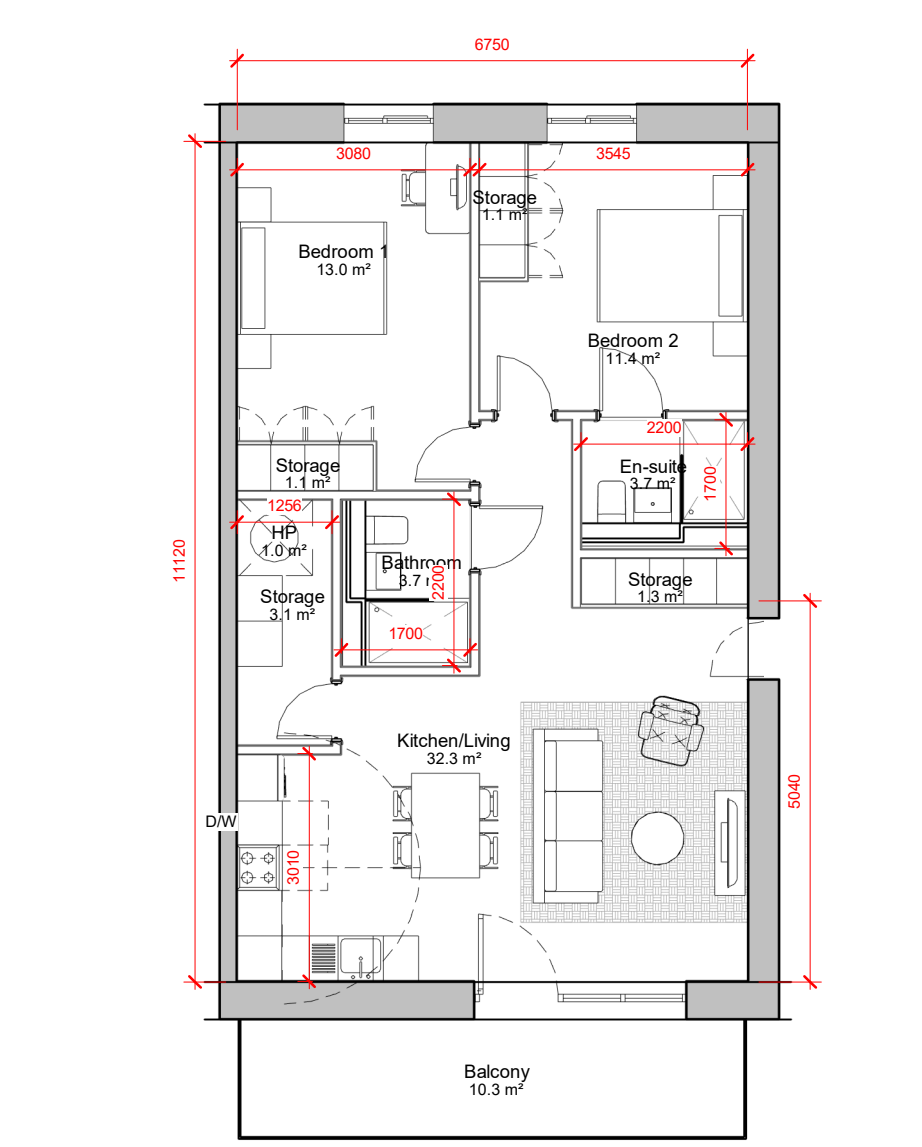
3 **2 BED TYPE A7**
1 : 100



2 Bed - TYPE A8 - Room Schedule	
Name	Area
Bathroom	5.0 m ²
Bedroom 1	11.6 m ²
Bedroom 2	13.0 m ²
En Suite	3.7 m ²
HP	1.0 m ²
Kitchen/Living	32.1 m ²
Storage	6.0 m ²
Terrace	7.2 m ²

2 Bed Apt - TYPE A8- Internal Area	
Area	76.0 m ²

4 **2 BED TYPE A8**
1 : 100



2 Bed - TYPE BB - Room...	
Name	Area
Balcony	10.3 m ²
Bathroom	3.7 m ²
Bedroom 1	13.0 m ²
Bedroom 2	11.4 m ²
En-suite	3.7 m ²
HP	1.0 m ²
Kitchen/Living	32.3 m ²
Storage	6.6 m ²

2 Bed Apt - TYPE BB- Internal...	
Area	75.1 m ²

9 **2 BED TYPE BB**
1 : 100

REV	DATE	DESCRIPTION	CKH	DRN
P1	18/06/2021	ISSUED FOR PLANNING		RC

STATUS CODE DESCRIPTION
ISSUED FOR PLANNING APPROVAL

CLIENT
THE SHORELINE PARTNERSHIP

PROJECT
PROJECT SHORELINE BALDOYLE GA03

DRAWING
2 BED APARTMENTS

PROJECT NUMBER: 950659 DATE: 05/27/21

SCALE@ A1: 1 : 100 DRAWN/CHECKED: Author/Checker

STATUS CODE: A1 DRAWING NUMBER: 950659-P-1905 REVISION: P1

Henry J Lyons

Architecture + Interiors henryjlyons.com +353 1 888 3333 info@henryjlyons.com 51-54 Pearse Street Dublin D02 KA66